



# **MIGRANT SITUATION IN CROATIA AS OF 30 OCTOBER 2015**

National Protection and Rescue Directorate  
November 2015.

# BEGINNING

- On September 17th the Government of the Republic of Croatia sets up a Committee for the organisation of all activities related to the transit of migrants through Croatia
- It is composed of representatives from
  - Ministry of Interior (main coordinator)
  - Ministry of Social Politics and Youth
  - Ministry of Foreign and European Affairs
  - Ministry of Labour and Pension System
  - Ministry of Health
  - General Staff of the Armed Forces
  - National Protection and Rescue Directorate



# TASKS OF THE COMMITTEE

- NPRD is tasked with providing logistical support (tents, blankets, sanitary blocks, potable water) and managing the existing and setting up new tent camps. We coordinate public works and the engagement of legal persons.
- MoI overall coordination, security, registration, organisation of transport
- MoD – construction works
- Ministry of Health – medical aid
- CRC – providing meals, clothing (humanitarian assistance)

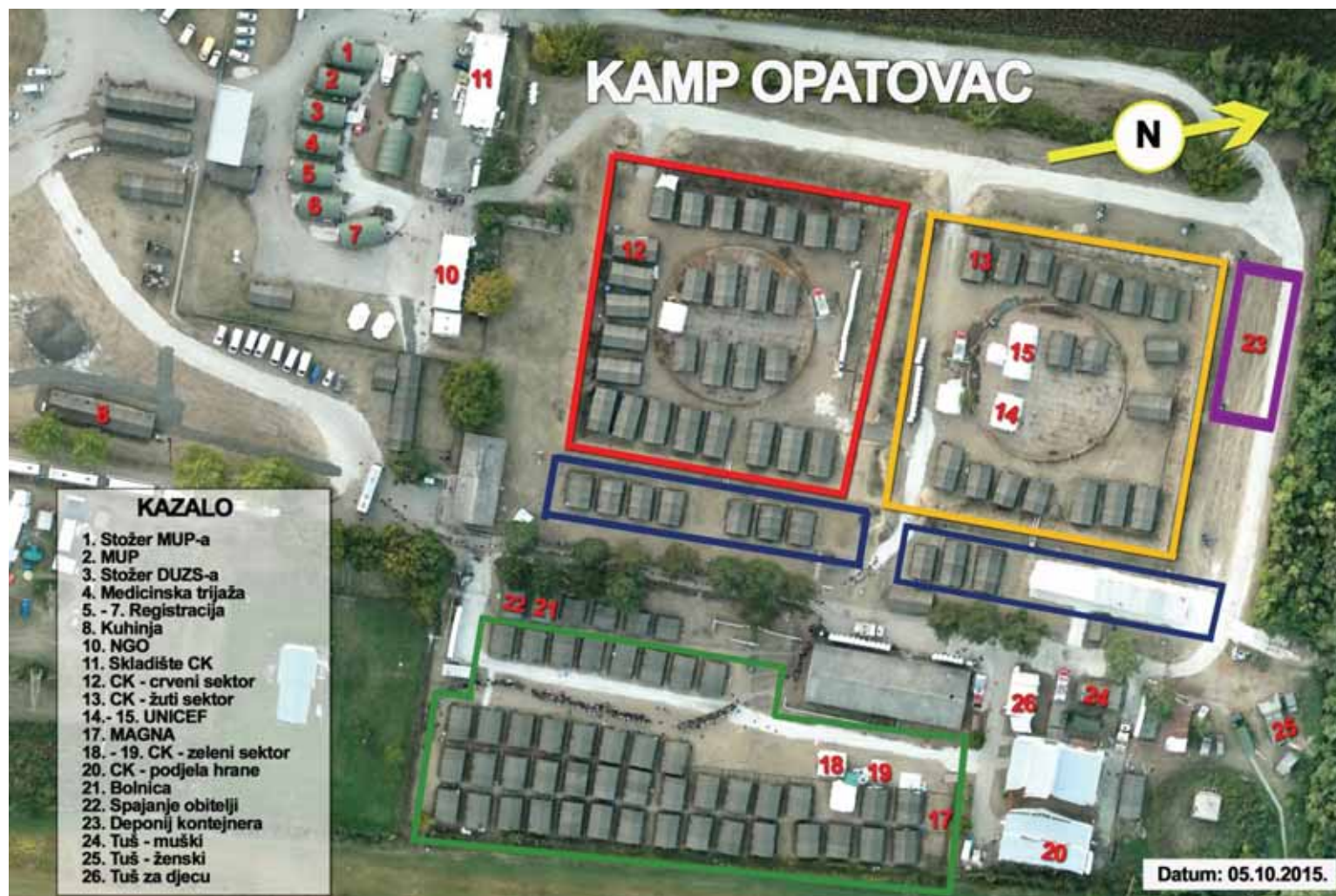


## SITUATION ROLL-OUT

- First response to the arrival of migrants:
  - ✓ Set up accommodation facilities in Ježevo (400), Zagreb (4000), Beli manastir (2000+1000), Čepin (500)
  - ✓ Sept. 19 the number of migrants arriving daily rises to over 4000
- Decision to set up one camp (tents) in Opatovac for 5000 people
- No border crossing closed but Tovarnik and Bapska main entry points
- Organised transport to reception camps
- Food, clothing medical assistance provided, registration conducted
- Organised transport to Hungary three times daily until Oct 16



# THE CAMP



# STATISTICS

## ○ Organisers

- 300 people on a daily basis (MoI, MD, NPRD, CRC, NGO's, volunteers, public works, transport companies)
- Distributed: 200 000 blankets, 40 000 raincoats, 300 t food, 500 000 l water
- 15 000 medical assistance
- Costs: over 70 M kuna (9M €)

## ○ Migrants

- Average of 6500 a day total of over 310 000
- 65% male, 20% female, 15% children
- 56% Syria, 20% Afghanistan, 18% Iraq



## CHALLENGES

- Crowd management
- Waste management
- Transport (bus/train)
- Weather conditions
- Vulnerable groups
- Cultural differences/language
- NGO coordination



## STRONG POINTS

- Safety
- 1 casualty
- medical care  
(births)
- excellent  
coordination of all  
actors
- fulfilling cultural  
requirements (food,  
accommodation)



# INTERNATIONAL ASSISTANCE

## ○ Requested:

### ○ EU Civil Protection Mechanism

- 26 October request for 30 items
- (Winter tents, Living containers , Sanitary containers , blankets, Self-inflating matts, Heaters, Sleeping bags, beds, ...)

## ○ Delivered (prior to Mechanism request):

- Czeck Republic – winter tents
- Qatar – 50 t of humanitarian assistance (blankets, tents,...)
- UNHCR – 300 plastic houses (Dubai hum.assistance)
- USA – winterised tents
  
- THW – blankets, gloves, boots, ext.cords
- Austria – gloves, raincoats, blankets, sleeping bags
- UK – gloves, tents, blankets, masks
- Luxemburg – gloves, masks, beds





## NEXT STEPS

- Setting up a winter camp in Slavonski brod
- Pick up of migrants in Šid (Serbia)



Arabela Vahtaric  
National Protection and Rescue Directorate  
Republic of Croatia

Nehajska 5  
10000 Zagreb  
Tel: +385 1 3650 077  
Fax: +385 1 3650 025  
e-mail: [arabela.vahtaric@duzs.hr](mailto:arabela.vahtaric@duzs.hr)

